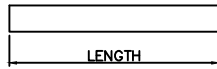


THIS DRG IS THE PROPERTY OF ELMATIC (CARDIFF) LTD AND MUST NOT BE COPIED (FULLY OR PARTIALLY) WITHOUT PRIOR CONSENT FROM ELMATIC

CARTRIDGE HEATER INFORMATION REQUIRED FOR QUOTATION PURPOSES



Ø IN mm OR INCHES

HEATER LENGTH mm OR INCHES

WATTS VOLTS

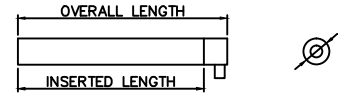
LEAD EXIT/TERMINATION

HEATER TYPE	DISCRIPTION	DRAWING	
G	2 LEADS EXITING ONE END		<input type="checkbox"/>
E	2 LEADS EXITING ONE END AND SILICA SEALED		<input type="checkbox"/>
A	2 SOLID PINS EXITING END AND LEADS WELDED TO PINS AND OVERSLEAVED		<input type="checkbox"/>
W	2 LEADS PLUS EARTH FITTED WITH ARMOUR BRAIDED CABLE		<input type="checkbox"/>
C	2 LEADS PLUS EARTH WITH STAINLESS STEEL CONDUIT FITTED		<input type="checkbox"/>
T/C	COMPLETE WITH 'J' OR 'K' T/C	<input type="checkbox"/> NON GROUNDED <input type="checkbox"/> GROUNDED AT TIP <input type="checkbox"/> GROUNDED AT MID POINT <input type="checkbox"/> NON GROUNDED AT MID POINT	<input type="checkbox"/>

LEADS AND TEMPERATURE RATING		
GLASS FIBRE - 400°C	<input type="checkbox"/>	<input type="text"/>
P.T.F.E./TEFLON - 250°C	<input type="checkbox"/>	
SILICAN RUBBER - 180°C	<input type="checkbox"/>	

LENGTH OF LEADS REQUIRED mm INCHES

QUANTITY REQUIRED



Ø IN mm OR INCHES

OVERALL HEATER LENGTH mm OR INCHES

INSERTED LENGTH mm OR INCHES

WATTS VOLTS

LEAD EXIT/TERMINATION

HEATER TYPE	DISCRIPTION	DRAWING	
N	2 LEADS EXITING AT 90° WITH STAINLESS STEEL SUPPORT CLIP		<input type="checkbox"/>
NW	2 LEADS EXITING AT 90° FITTED WITH ARMOUR BRAIDED CABLE		<input type="checkbox"/>
N1	2 LEADS EXITING AT 90° FITTED WITH STAINLESS STEEL CONDUIT		<input type="checkbox"/>
L	2 LEADS EXITING AT 90° THROUGH A 45° CUT TUBE WELDED OR SOLDERED ON		<input type="checkbox"/>
T/C	COMPLETE WITH 'J' OR 'K' T/C	<input type="checkbox"/> NON GROUNDED <input type="checkbox"/> GROUNDED AT TIP <input type="checkbox"/> GROUNDED AT MID POINT <input type="checkbox"/> NON GROUNDED AT MID POINT	<input type="checkbox"/>

LEADS AND TEMPERATURE RATING		
GLASS FIBRE - 400°C	<input type="checkbox"/>	<input type="text"/>
P.T.F.E./TEFLON - 250°C	<input type="checkbox"/>	
SILICAN RUBBER - 180°C	<input type="checkbox"/>	

LENGTH OF LEADS REQUIRED mm INCHES

QUANTITY REQUIRED

ADDITIONAL REQUIREMENTS PLEASE SPECIFY

FOR MORE INFORMATION ON OUR CARTRIDGE ELEMENTS PLEASE VISIT OUR GALLERY AT WWW.ELMATIC.CO.UK/PRODUCTS/CARTRIDGE-HEATERS/